



CATALOGO
1980

Nuova Donatella
International

CONCESSIONARI " EUROMATIC " ALL'ESTERO

AUSTRIA: Vienna - ARABIA: Jeddah - BELGIO: Jumet -
BRASILE: San Paolo - CANADA: Montreal - CIPRO:
Nicosia - DANIMARCA: Kiellerup - EGITTO: Cairo -
FINLANDIA: Helsinki - FRANCIA: Parigi, Deville-les-
Rouen, Valence, Nimes, Blagnac, Albens - GERMANIA
OCC.: Grafenrheinfeld - GIAPPONE: Tokyo - GRAN BRE-
TAGNA: Londra - GRECIA: Atene - GIORDANIA: Amman -
IRAN: Teheran - IRLANDA: Dublino - LIBANO: Antelias -
MALAYSIA: Penang - MALTA: Mosta - MAROCCO: Ca-
sablanca - NIGERIA: Lagos - OLANDA: Den Haag, Hoe-
velaken - PORTOGALLO: Lisbona - STATI UNITI: New
York, Edison - SIRIA: Baghdad - SVIZZERA: Losanna -
SUD AFRICA: Maitland - TUNISIA: Tunisi - TAILANDIA:
Bangkok - VENEZUELA: Caracas.

Concessionari in tutte le principali città d'Italia

E' vietata la riproduzione parziale o totale degli articoli stampati nel presente catalogo.

Nuova Donatella

s. n. c. - di OMERO PRETI & C.

HAIRDRYERS MANUFACTURER AND HAIRDRESSERS EQUIPMENT
FABRIQUE DE CASQUES SECHOIRS ET D'EQUIPEMENTS POUR LA COIFFURE
FABBRICA CASCHI ASCIUGACAPELLI E ARREDAMENTI PER PARRUCCHIERI

41100 MODENA - ITALY - VIA G. B. SPACCINI, 2 - TEL. (059) 31.20.87 - 31.21.17

1935 - 1980

Over 45 years of activity
in the field of equipment
for hairdressers



The development of our production is based on the demand of the market. This enabled us to reach a first rank position on the world market.

O. PRETI

Some of our collaborators



Ing. Salvatore Frau
port-salesman



Mrs. Paola Preti
book-keeping



Mrs. Claudia Santini
secretary



Geom. Giorgio Dotti
designer



TECNICIAN STAFF

*The hood is just an element
of the supply; the rest in the
organization that Donatella
puts at the customer's disposal
from the moment he realised
he needs a hood for his lifetime*



The world is smaller and smaller.

The distribution centres, created
by Donatella all over the world,
reduce distances even more.

Nuova Donatella

en



Oscar Monet
Belgique

BELGIQUE





Takigawa
Japan

Nuova Donatella
in
JAPAN

Nuova Donatella
in
FINLAND



Eino Marttinen
Finland





A. Chabert
Brasil

Nuova Donatella
in
BRASIL

Nuova Donatella
en
FRANCE



R. Letourneur
France





W. Haechler
Suisse

SUISSE

Nuova Donatella

en



Nuova Donatella



M. L. Abrantes
Portugal

in
PORTUGAL



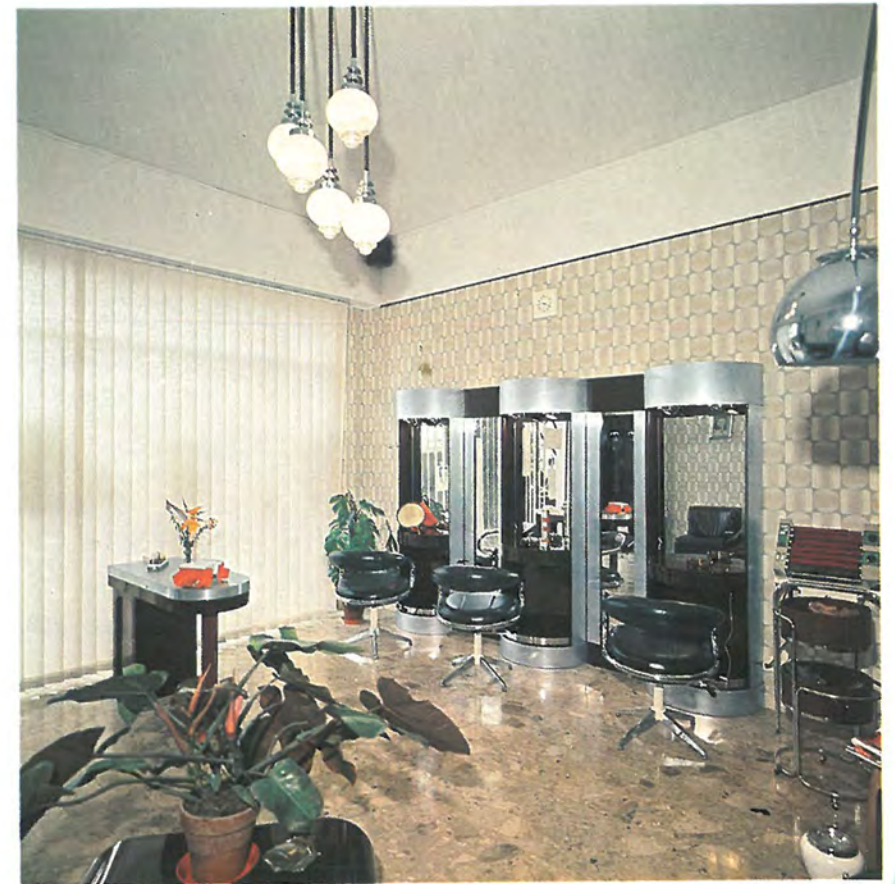


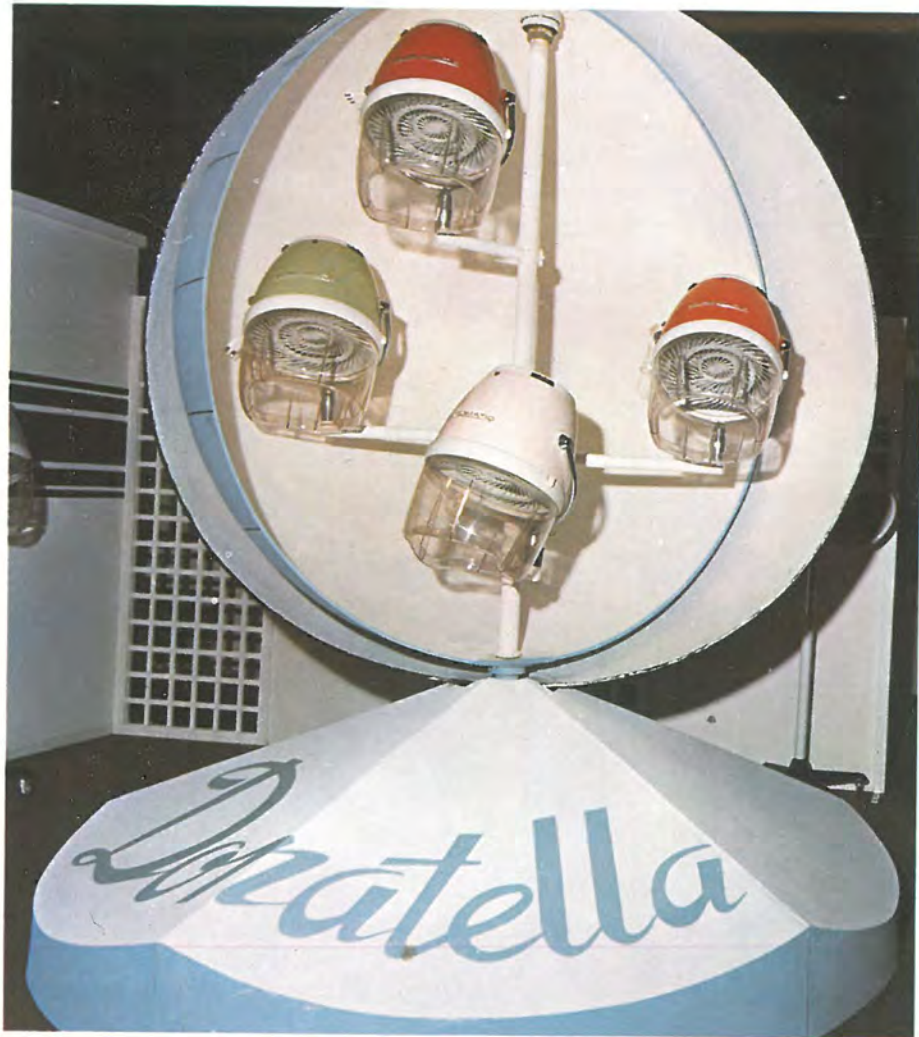
in
CANADA

Nuova Donatella



L. Coffe
Canada





Nuova Donatella
in
AUSTRIA



Mr. Pytela
Austria



Nuova Donatella
en
JORDAN

Mr. Suleiman
Jordan



ETS.
E. C. F.

FRANCE

Nuova Donatella

en





Mr. Kirsh

*Nuova
Donatella*

in

UNITED
KINGDOM



Messrs. ANTONIA PRODUCTS - London



Nuova Donatella



Mr. Kr. B. Andersen

in
DENMARK





Nuova Donatella



Mr. Ebner

in
WEST - GERMANY

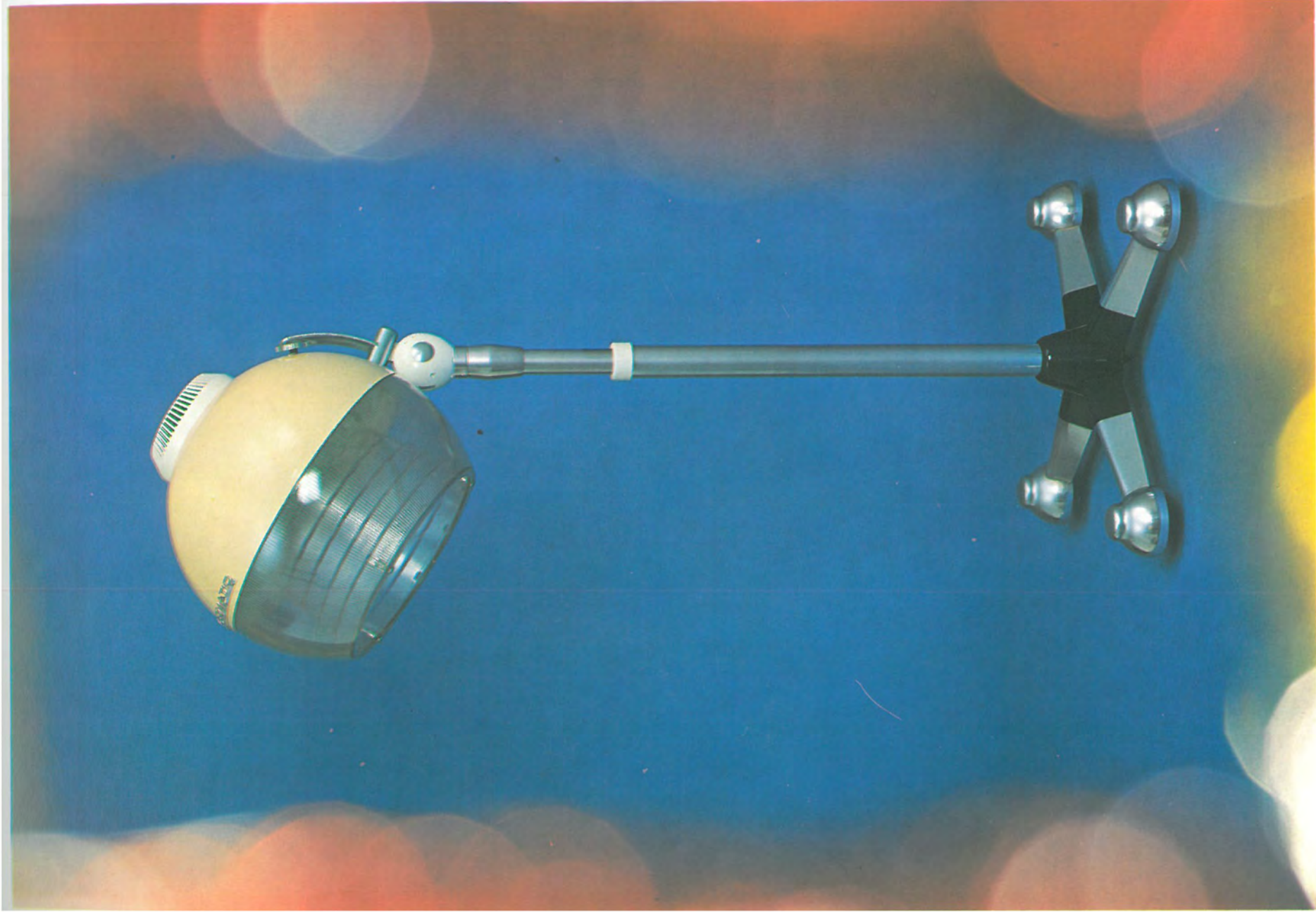






TECHNICAL CHARACTERISTICS OF THE NEW EUROMATIC ELECTRONIC HAIRDRYER

- 1) Electronic time clock, at the expired of the time it disconnects the current and stops.
- 2) Electronic temperature regulator, completely transistorized.
- 3) Special resistance isolated with asbestos, constant temperature, reduced current consumption, maximum life and safety.
- 4) One-phase motor, studied on purpose, self-lubricating, electronic speed from 2000 until 800 revolutions.
- 5) Circulating air special fan allowing a quick and uniform drying, ultra silent.
- 6) New capillary filter assuring the inlet of clean air in the visor.
- 7) Interior in plastic material with asbestos, completely isolated, according to the provisions of EEC (European Economical Community).



EUROMATIC ELECTRONIC INTERNATIONAL

MOD. 180/S



DIRECTIONS FOR USE OF THE -NEW HAIR- DRYER EUROMATIC ELECTRONIC

- 1) To plug into the socket.
- 2) To turn the knob — **Timer** — into the position 60 minutes.
- 3) To turn the knob — **Thermostat** — into the position 45/50 degrees.
- 4) To turn the knob — **Speed** — into the + position.
- 5) In order to start the hair-dryer push the pushbutton marked — **On** — and the hair-dryer starts electronically.
- 6) In order to stop the hair-dryer before the fixed time, push the pushbutton marked — **Off** —, without touching the other knobs, as the hair-dryer stops electronically.
- 7) Before putting the hair-dryer in movement, it is necessary that the knob — **Timer** — and the knob — **Speed** — be in the positions as above indicated.
- 8) The hair-dryer once put into movement, you can turn all knobs at pleasure, in order to give either time, or the calorie, or the speed of the desired ventilation.
- 9) The tension rod put on the side of the visor, has **always** to be pushed upward, it has to be pulled downward **only** in the case, when the customer wishes a calorie higher than 55 degrees.
- 10) If you wish that your hair-dryer EURO-MATIC ELECTRONIC MAY render the maximum of its performances and may last for a long time, the only requested maintenance is the CLEANING.





NEW HAIRDRYER

“Euromatic-Export,, Art. 173 of material “URTAL,, - Montecatini Edison

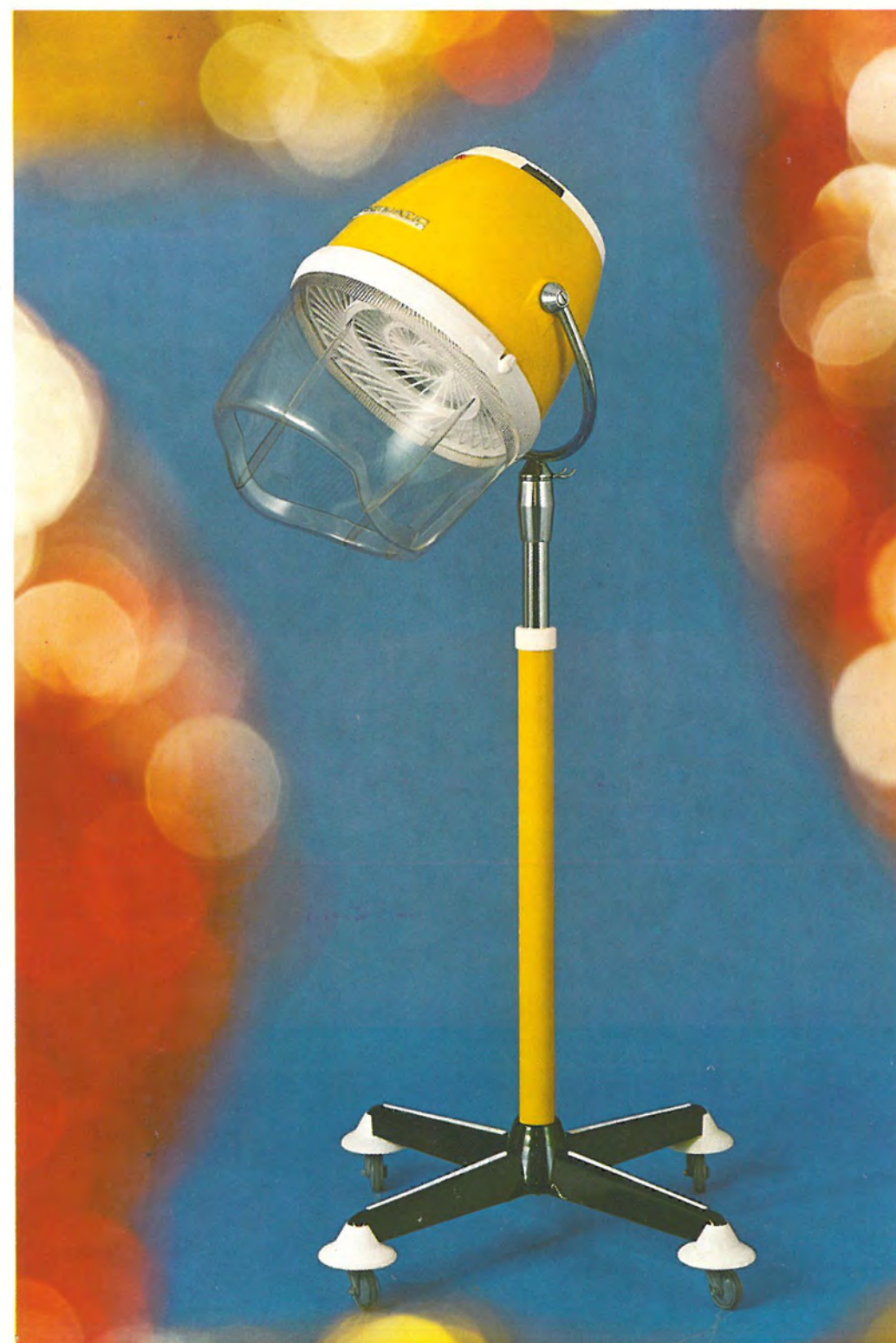
The specification of the new hairdryer Art. 173 with foot and at wall.

- 1) a clock which cuts in the time from 5' to 60' minutes, hand regulating; at the expiration of the prefixed time it switches of the current automatically and it stops;
- 2) a termoregulator regulating heat, hand graduated from 20° to 70°;
- 3) a protected resistance made of a special alloy which contains heat for long time, allows a constant temperature and reduces the waste of current to the minimum;
- 4) A one phase motor particularly studied at 1400 revolutions and self-lubricated.
- 5) On request we apply a two speeds motor and with automatical revers. Minimum speed 1400 revolutions - Maximum 2400 revolutions.
- 6) On request we apply with automatical revers.
- 7) A special fan at circulating flux of air allows a quiker drying abofisching the cold zones.
- 8) its inner part is made of material containing amianthus and has a double insulation as the regulations of C.E.E. (European Economy Community).

CASCO EUROMATIC EXPORT MOD. 173/S



Testata con campana apribile - Cerniera centrale



Mod. 173/S con piede lusso





EUROMATIC EXPORT MOD. 173/S

Art. 173/S with opening Hood



Art. 173/S on Luxury foot

INSTRUCTIONS

- 1) Put distilled water into the bottle, making sure that it reaches the level indicated by the two red dots on the sides of the bottle.
- 2) Wait a moment until a part of the water runs into the boiler. Now turn the knob on the clock to 30 minutes. Wait about 10 minutes for steam to come out.
- 3) The quantity of water: the contents of the boiler are sufficient for 30 minutes, that is, practically for a complete application from beginning to end.
- 4) At the end of every application remove all the water left in the boiler through a tap. **ATTENTION:** always fill the bottle with more water and follow the instructions as in 1) and 2) above.

**STEAMER**

A well-dosed vaporizer allows the hairdresser to carry out treatment for the regeneration of the hair. It also serves for beauty treatment of the face.



DOUBLE USE STEAMER EUROMATIC

The simplest and most practical vaporizer

Allows the hairdresser double use:

- TREATMENT OF HAIR
- TREATMENT OF FACE: for removing make-up, for moistening the skin, etc.

The vaporizer has two steam inhalers, one semi-circular for the hair, and the other cylindrical for the face.

When one wants to change from one use to the other, the steam inhaler must be substituted and the container moved upwards.

To move the container, it is necessary only to pull it forwards and move it upwards since it is held in the centre by a pivot with a spring.

Attention: when applying either the semi-circular inhaler or the cylindrical one, the part with holes must be face upwards.



**INFRA-RED
ACCELERATOR
(patented model)**

This low-voltage, infra ray dryer in the development, besides reducing application times on an average of 7 minutes for dyes and perms and 15 minutes for decolouring. Sitting time can vary according to the characteristics of the hair to be treated.

CHARACTERISTICS

The apparatus is equipped with 84 bulbs at 14 volt, which, by means of a special transformer, allows for use of the hair dryer by inserting the plug into a 220 volt socket. A switch enables the user to change the intermediate temperature from maximum to minimum, especially for when the apparatus is used for decolouring. Maximum safety, due above all, to the voltage reduction from 220 to less than 14.



INFRARED ACCELERATOR (MOD. ON WALL)

EUROMATIC ACCELERATOR

- 84 lamps at 12 volt. for the best results
- 2 positions light
 - Perming 4 minutes - Coloring 5 minutes
 - Bleaching 5 minutes
 - Setting 4 minutes - Treatment 10 minutes
- Utmost security and guarantee



Hand-dryer EUROMATIC super turbo 2000 in white Makrolon.
Hand-dryer EUROMATIC Professional 1300 in white and black ABS.





Series "EUROMATIC INTERNATIONAL,"



The specification of the new hairdryer Art. 172 with foot and at wall.

- 1) A clock which cuts in the time from 5' to 60' minutes, hand regulating, at the expiration of the prefixed time it switches of the current automatically and it stops.
- 2) A thermoregulator regulating heat, hand graduated from 20° to 70°.
- 3) A protected resistance made of a special alloy which contains heat for long time, allows a constant temperature and reduces the waste of current to the minimum.
- 4) A one phase motor particularly studied at 1400 revolutions and self-lubricated.
- 5) On request we apply a two speeds motor and with automatical revers. Minimum speed 1400 revolutions - Maximum 2400 revolutions.
- 6) On request we apply with automatical revers.
- 7) A special fan at circulating flux of air allows a quiker drying abolishing the cold zones.
- 8) Its inner part is made of material containing amianthus and has a double insulation as the regulations of C.E.E. (European Economy Community).

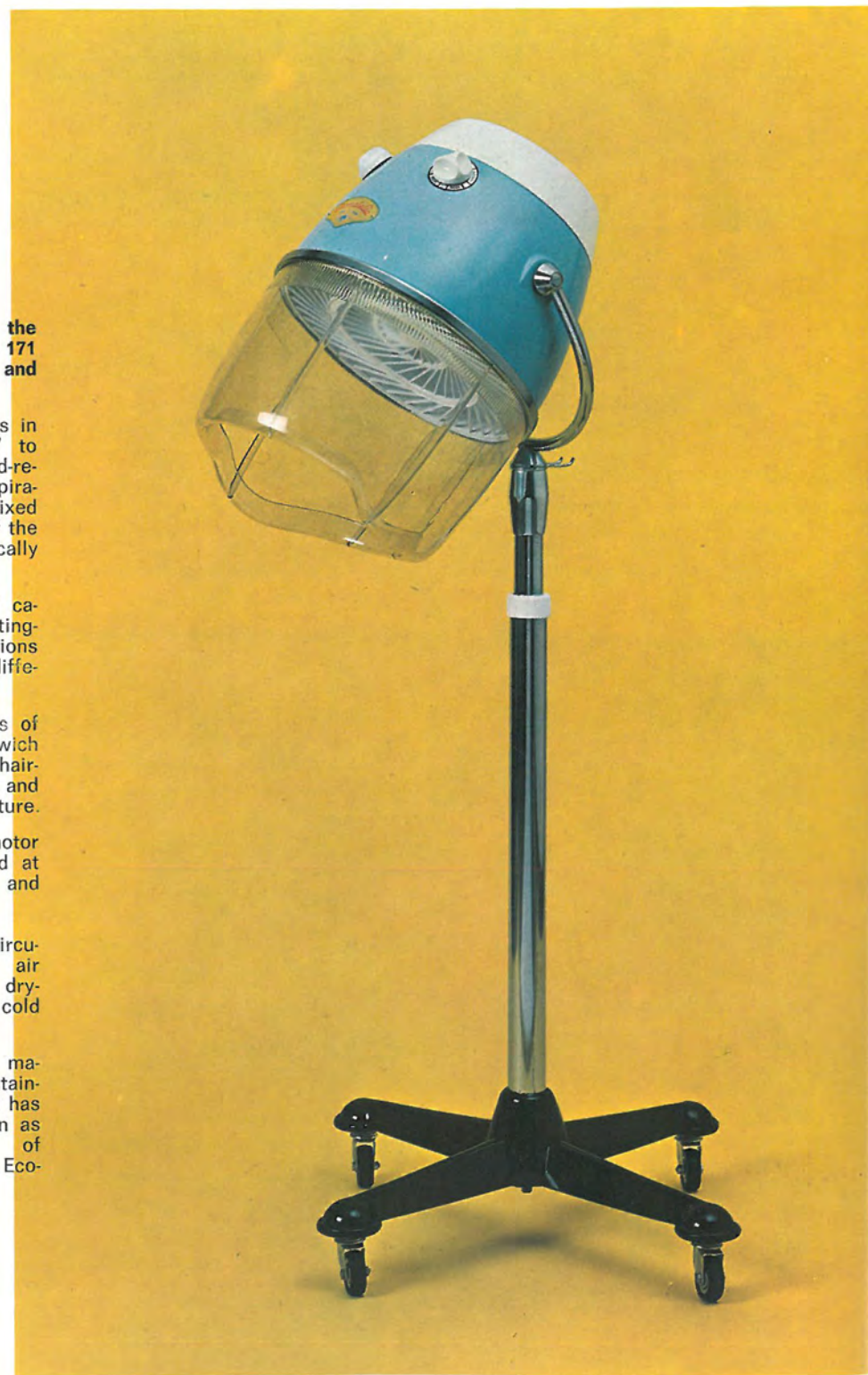




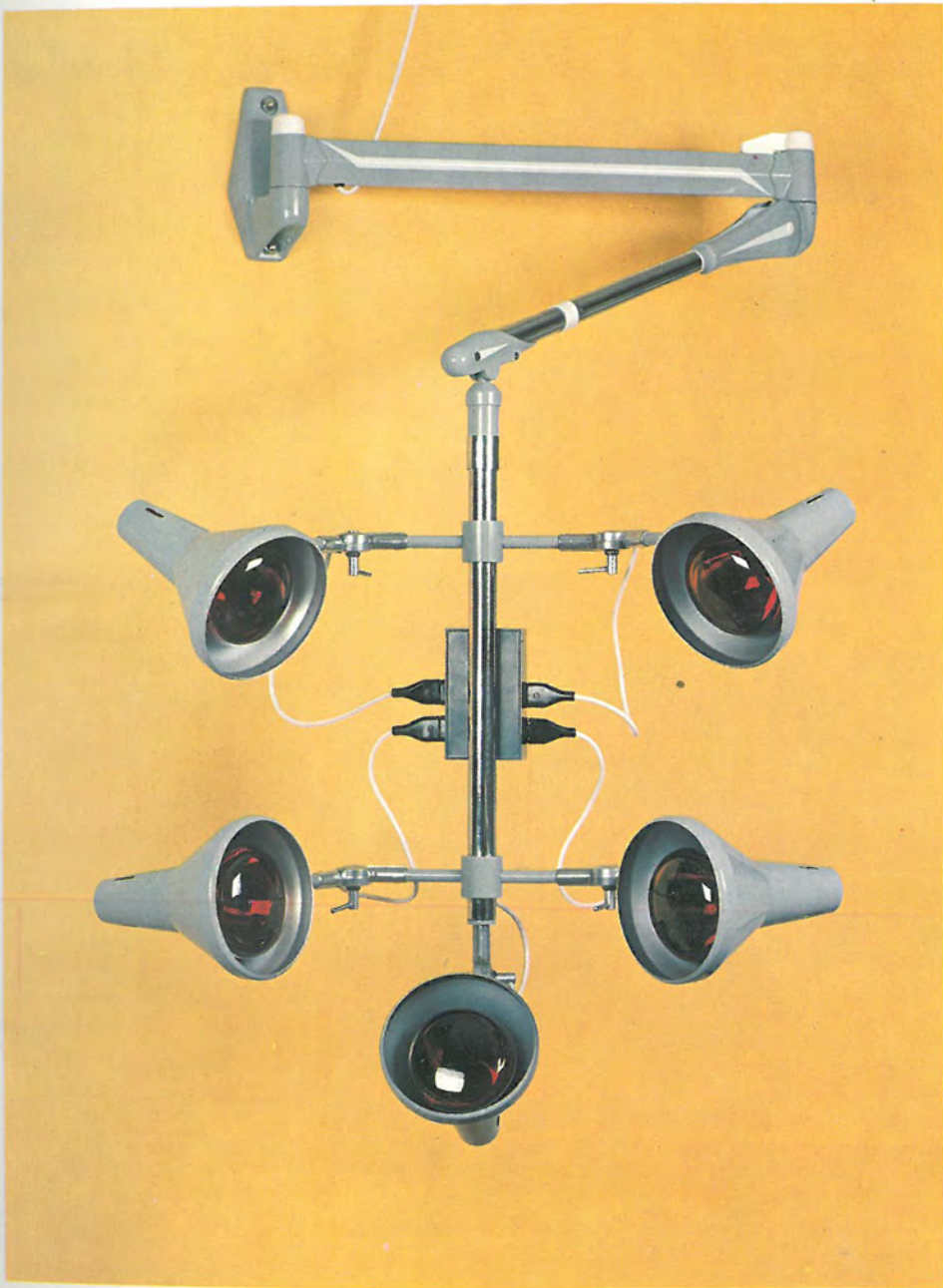
Art. 171/M on wall

The specification of the new hairdryer item 171 euromatic with foot and at wall.

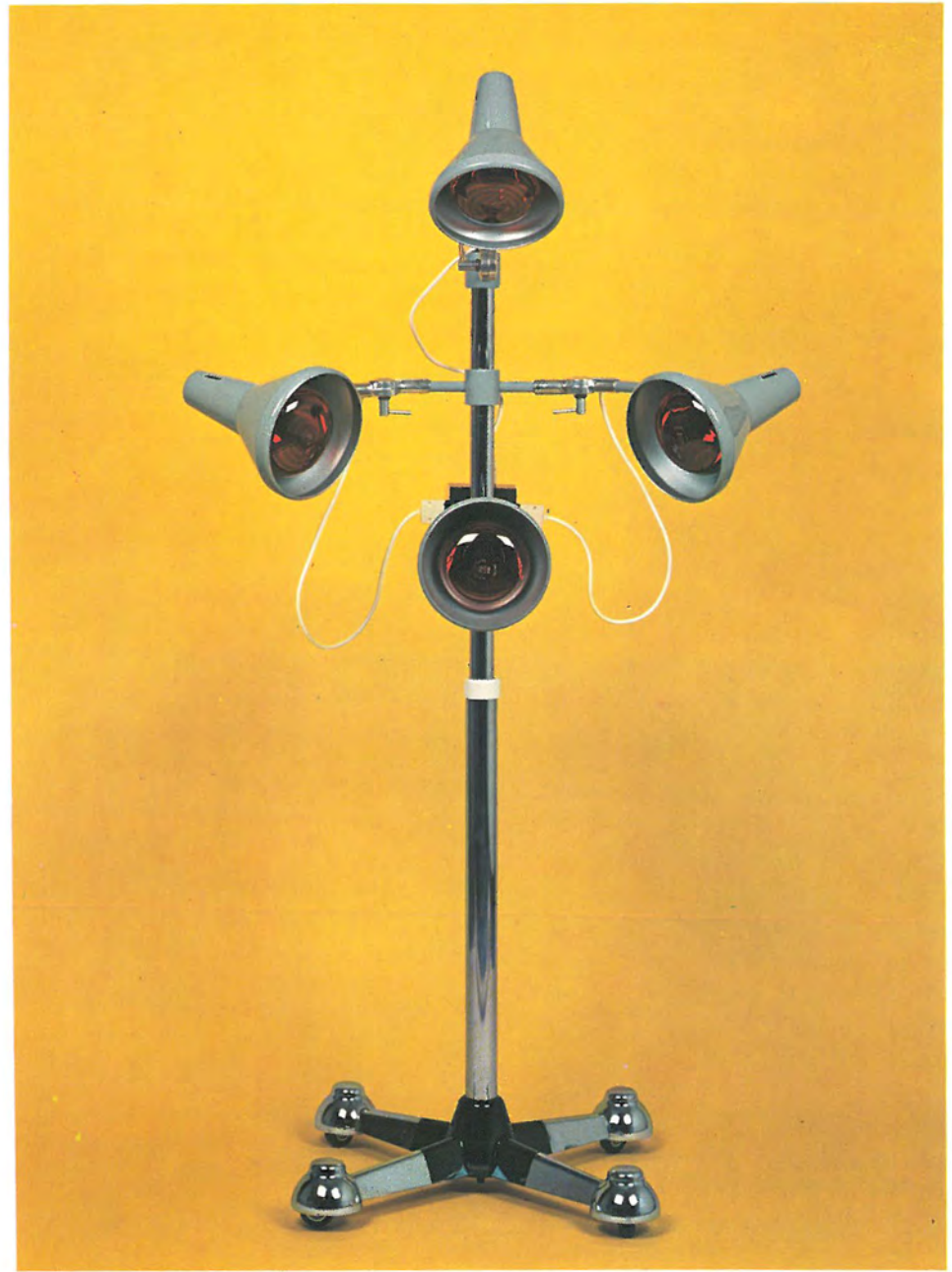
- 1) A clock which cuts in the time from 5' to 60' minutes, hand-regulating; at the expiration of the prefixed time it switches of the current automatically and it stops.
- 2) A commutator of calory hand-regulating with five positions corresponding to different calories.
- 3) Resistance at coils of nickel - chrom'um-wich produces in the hair-dryer a constant and agreeable temperature.
- 4) A one phase motor particularly studied at 1300 revolutions and self-lubrificated.
- 5) A special fan at circulating flux of air allows a quiker drying aboloshing the cold zones.
- 6) Its inner part is made of material containing amianthus and has a double insulation as the regulations of C.E.E. (European Economy Community).



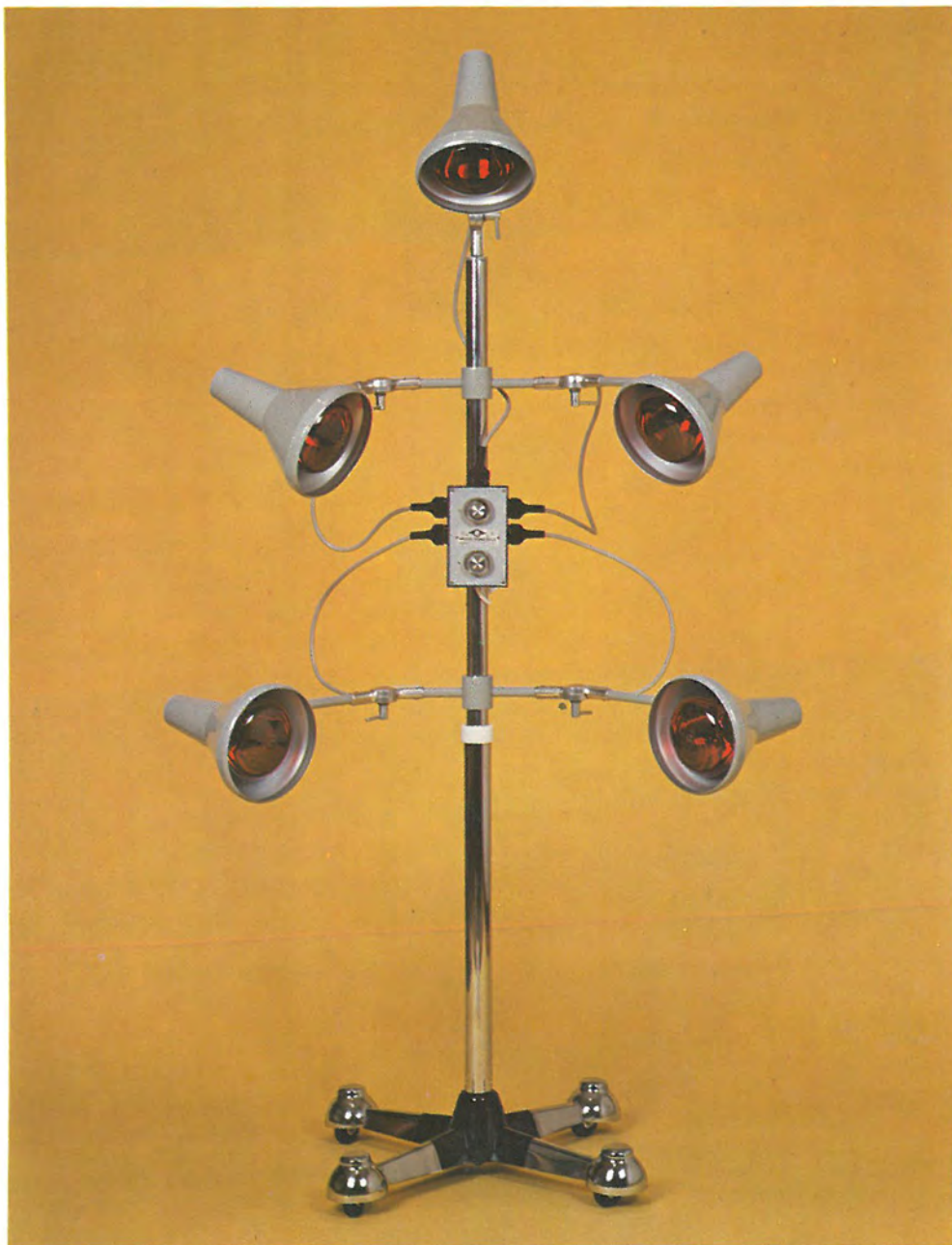
Art. 171/S on foot



Infra light Euromatic 5 on wall



Infra light Euromatic 4 on foot



Infra light Euromatic 5 on foot



Infra hand light Euromatic

Service "EQUIPEMENTS,,





Salon EMORE, Modena



Art. 579 - Dressing table unit laminated in walnut wood with hole for hand-dryer, unit size cm. 220 x 73 - dividing size cm. 220 x 35.



- Art. 562** - Unit dressing table with wooden frame, size cm. 200 x 125
Art. 563 - Dividing for unit art. 562 with wooden frame, size cm. 200 x 30
Art. 561 - Waiting-room table with the top in glass, size cm. 50 x 50
Art. 560 - Waiting pouffe with rectangular top and chromium metal
Art. 559 - Waiting pouffe with round top and chromium metal - size \varnothing cm. 40



Art. 550 - Round dressing table type column
with four compartment in laminated satin
steel, cm. 280 x \varnothing 130.

Art. 226 - Trolley for hand dryer in chromium metal.



Art. 545 - Dressing table unit with light and satin steel Inox frames, cm. 110 x 180.
Art. 541 - Shape table for waiting room.



Art. 483 - Round dressing table unit divided with crystal and laminated satin steel.
Art. 455 - Laminated and fumè glass waiting-room table.



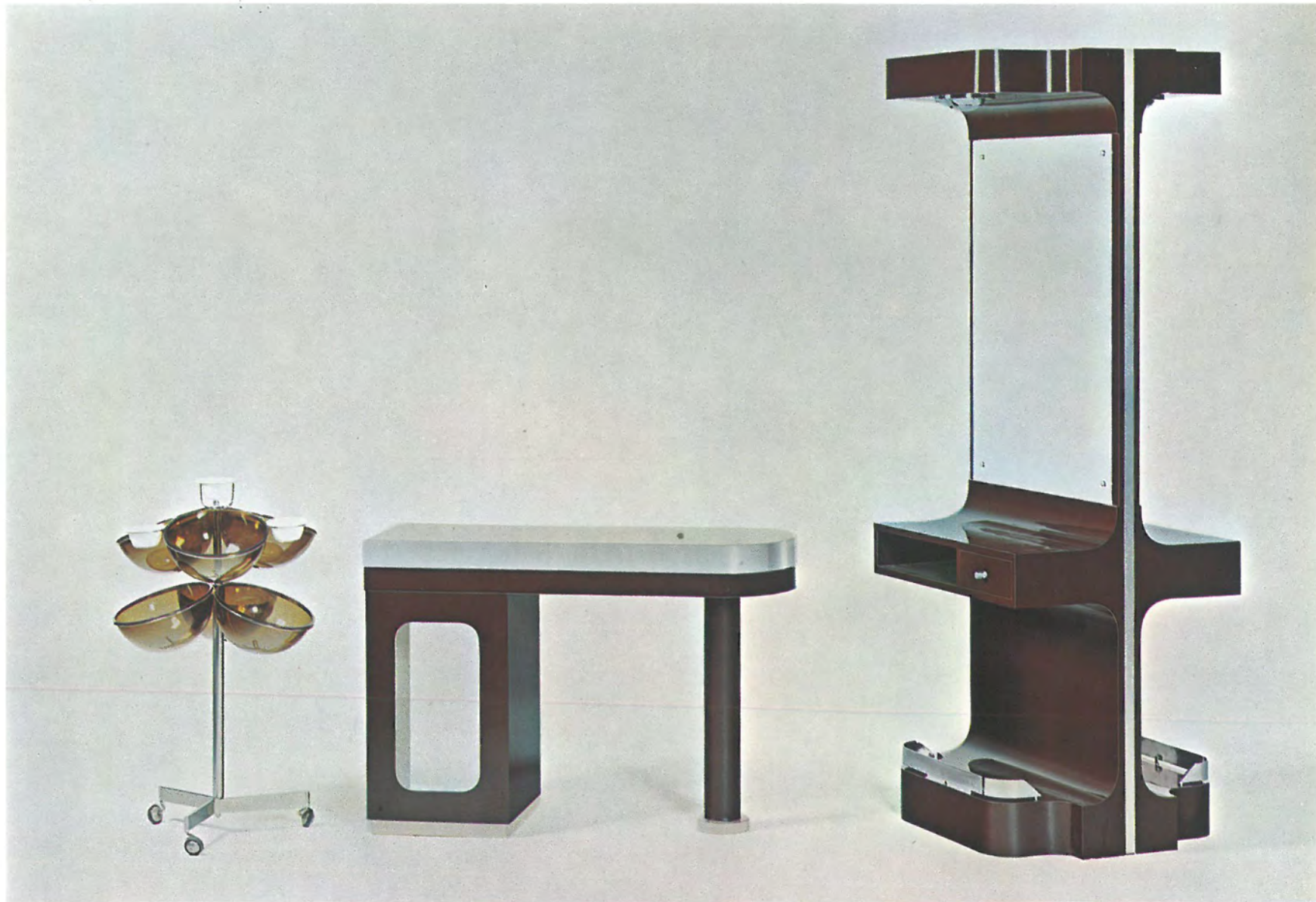
Art. 501 - Dressing table unit with trolley incorporated in the divider.
Art. 502 - Longe chair in units squadre style.
Art. 503 - Curved table for waiting room with crystal undershelf.



- Art. 466** - Dressing table unit, satin steel Inox frames with lights and separate foot-rests.
Art. 456 - Revolving easy chair with circular base.
Art. 460 - Lounge chair quilted upholstery.
Art. 439 - Laminated waiting table.



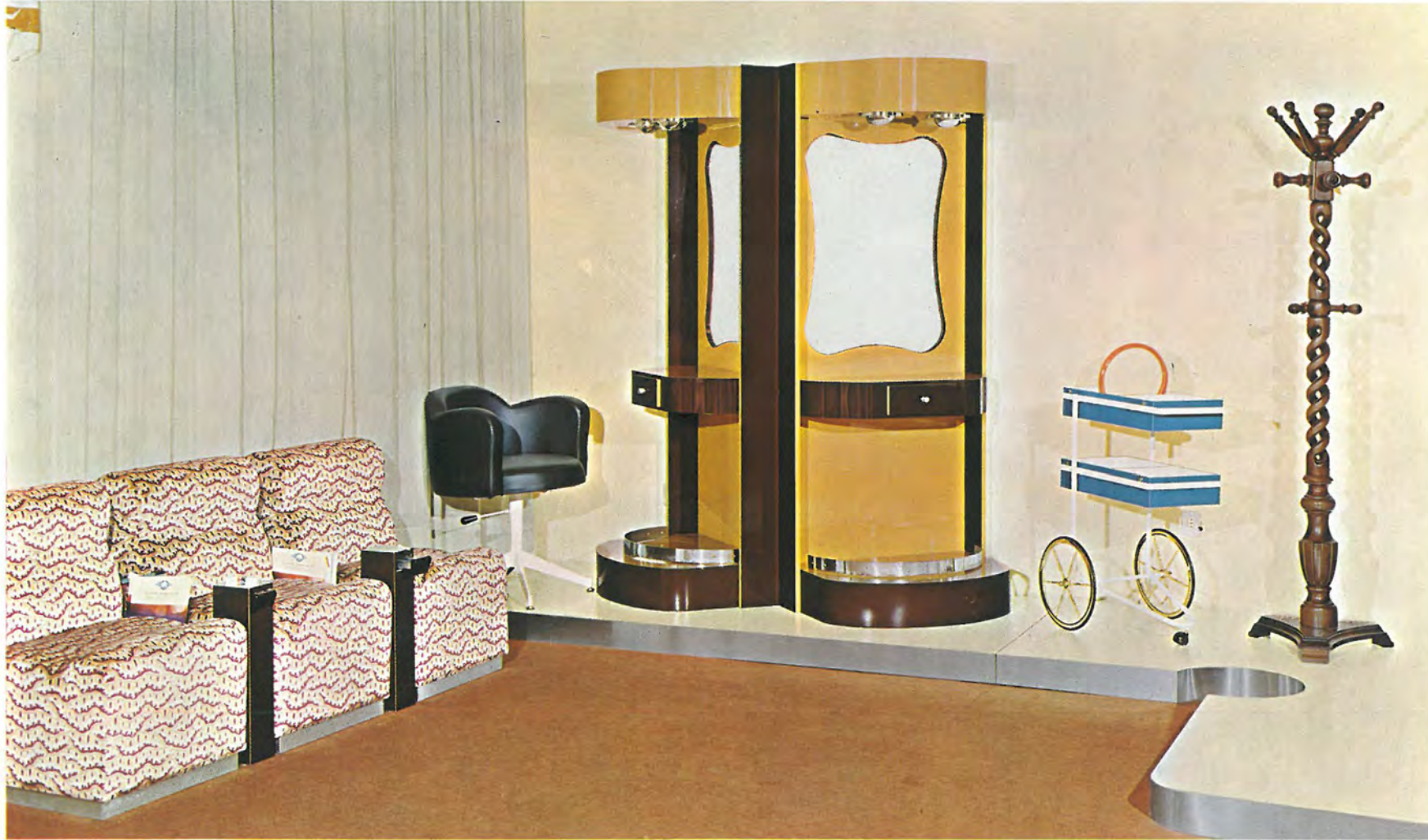
Art. 478 Dressing table unit in laminated type walnut wood, complete as picture - size cm. 90 x 220.
Divided included size cm. 40 x 220.



Art. 221 - Roller Trolley Type Moon.

Art. 487 - Cash desk with display area one drawer and column support.

Art. 488 - Dual sided dressing table complete with spotlight and mirrors.



- Art. 491** - Waiting chair unit upholstered in velvet.
Art. 492 - Portable magazine table with ashtray incorporated.
Art. 494 - New style dressing table unit complete with spotlights and mirrors.
Art. 495 - Coat hanger in wood braided effect.



Art. 521 - Laminated service cupboard with show case, cm. 180 x 90

Art. 522 - Waiting-room table, with chromium-plated metal and brown glass, cm. 100 x 60

Art. 523 - Laminated dressing table unit with lights and satin steel Inox frames, cm. 200 x 110



Art. 475 - Unit shelf with crystal mirror partitions and spot lamps.

Art. 476 - Occasional table with glass top.

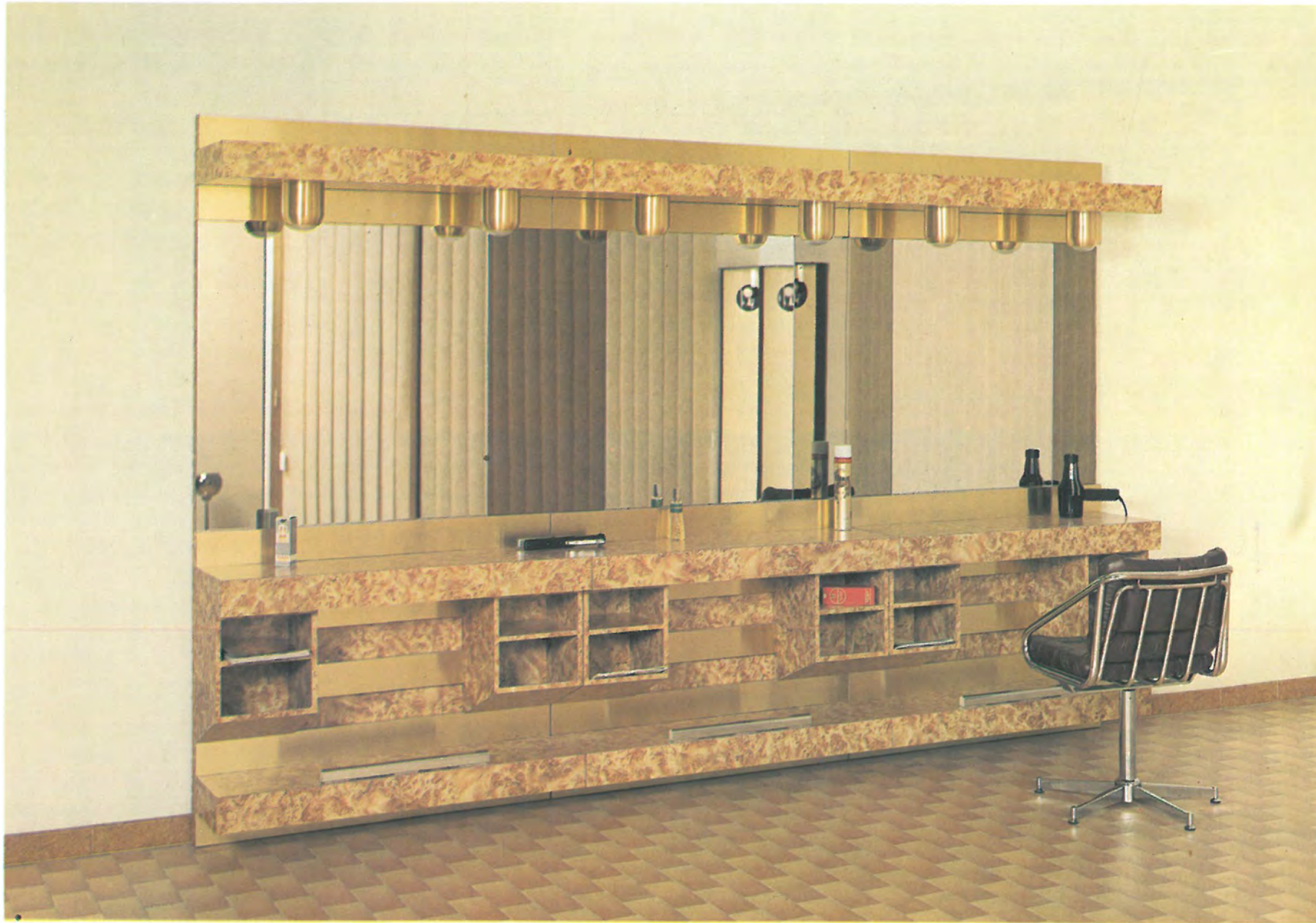
Art. 477 - Four seater settee with attachments for Euromatic hoods - dimensions 215 x 65 cm.

Art. 474 - Revolving work armchair with chrome - finished arms.



Art. 426 - Shelf with squadre lacquered frames.





Art. 479 Dressing table unit in laminated type valnut wood, complete as picture - size cm. 110 x 210.



Art. 480 Dressing table with single units, without divided, complete as picture - size cm. 110 x 200.



Art. 580 Dressing table unit for BARBER in laminated, complete as picture - size cm. 150 x 220.



Art. 581 Dressing table unit for BARBER in laminated, complete as picture - size cm. 150 x 220.



Art. 582 Dressing table unit for BARBER in laminated and chromium tube, complete as picture - size cm. 150 x 200.



Art. 583 Dressing table unit for BARBER in laminated, complete as picture - size cm. 150 x 200.

Art. 530 Revolving chair unisex with hydraulic pump art. 50.



Art. 584 Dressing table unit for BARBER in laminated type walnut wood, complete as picture - size cm. 150 x 220.



Art. 481 Revolving chair with band in chromium iron.
Art. 437 Revolving chair for working.



- Art. 565** - Two seater settee with attachments for EUROMATIC dryers.
Art. 566 - Arm-chair for waiting with removable cushions.
Art. 567 - Portable magazine table with ashtray incorporated.
Art. 568 - Two seater settee for waiting with removable cushions.
Art. 569 - Arm-chair with attachment for EURO MATIC dryers.



Art. 473 - Revolving chair for working with Hydraulic pump.
Art. 474 - Revolving chair for working with castors on base.



Art. 577 - Revolving chair with frame in chromium tube.



Art. 576 - Revolving chair for working.



Art. 514 - Revolving chair with hydraulic pump.



Art. 574 - Revolving chair with frame in chromium iron.



- Art. 556** - Chair with attachment for EUROMATIC Dryer.
Art. 555 - Settee with attachments for EUROMATIC Dryer.
Art. 558 - Waiting chair without attachment.
Art. 557 - Waiting settee without attachment.



Art. 554 - Revolving chair.



Art. 552 - Revolving chair



- Art. 516** - Manicure table with two drawers in laminated and in leather.
Art. 517 - Cylindrical pouf leather-covered.
Art. 518 - Square pouf leather-covered.
Art. 519 - Waiting pouf whole leather-covered.



Art. 553 - Revolving chair with hydraulic pump.



Art. 509 - Square waiting table, chromium-plated and brown glass - cm.75 x 75.



Art. 415 - Leather-covered chair with attachment for Euromatic dryer - Bologna Style.

Art. 471 - Leather-covered chair with attachment for Euromatic dryer.



Art. 421 - Chair for waiting - leather-covered interior, laminated exterior.
Art. 420 - Chair with attachment for Euromatic dryer, as stated above.



Art. 327 Dressing table two-places in laminated, complete as picture - size cm. 185 x 55 x 100.



Art. 328 Dressing table two-places in laminated, complete as picture - size cm. 185 x 55 x 110.



Art. 510 - Leather-covered assembled waiting armchair.

Art. 511 - Leather-covered chair with attachment for Euromatic dryer.



Art. 548 - Revolving chair with adjustable back hydraulic pump in steel chromium.



Art. 547 - Revolving chair for styling « Unisex » adjustable back and hydraulic pump.



Art. 546 - Revolving chair for styling with shape arm-rest in chromium and luxury stand.



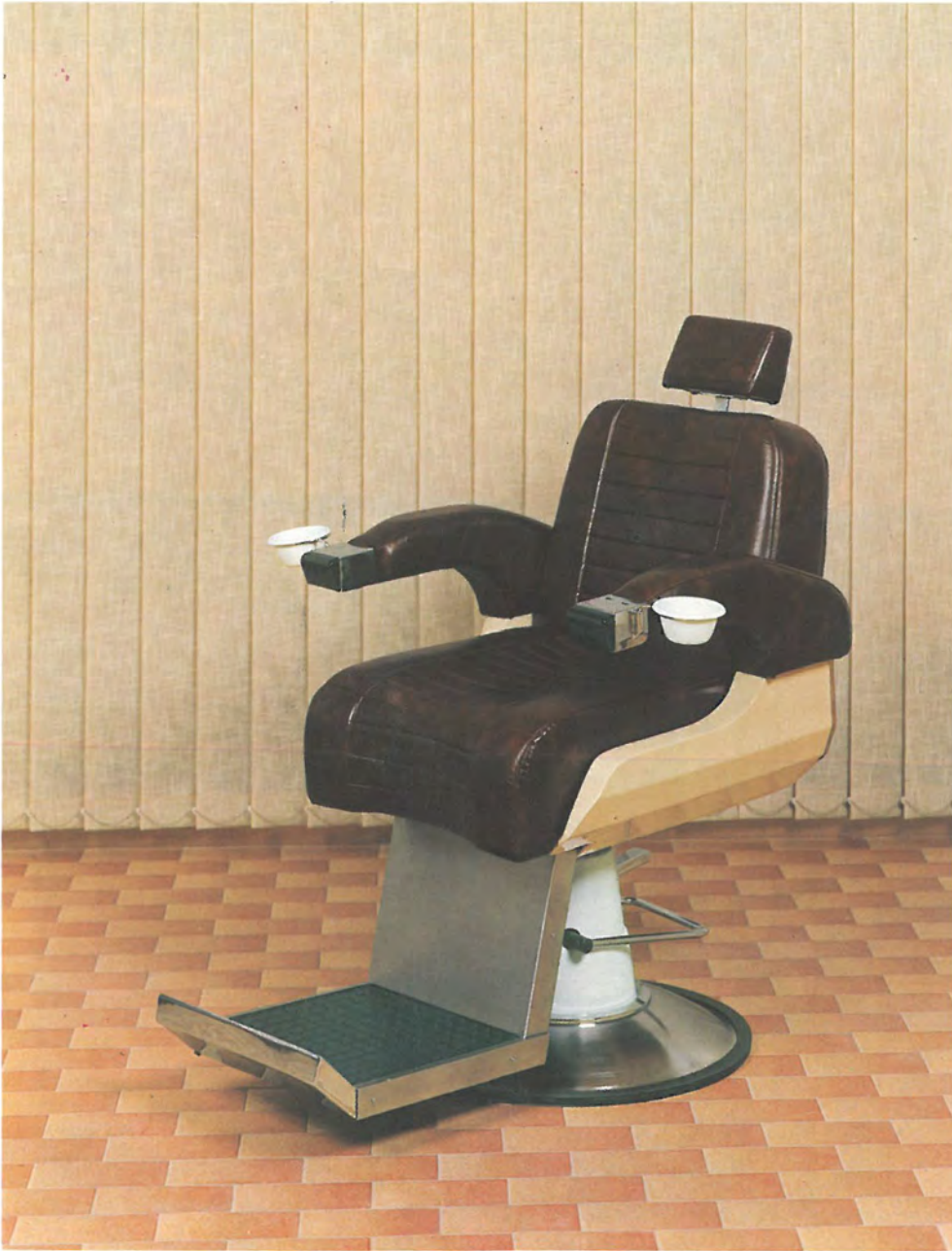
Art. 549 - Revolving chair for styling « Unisex » with hydraulic pump.



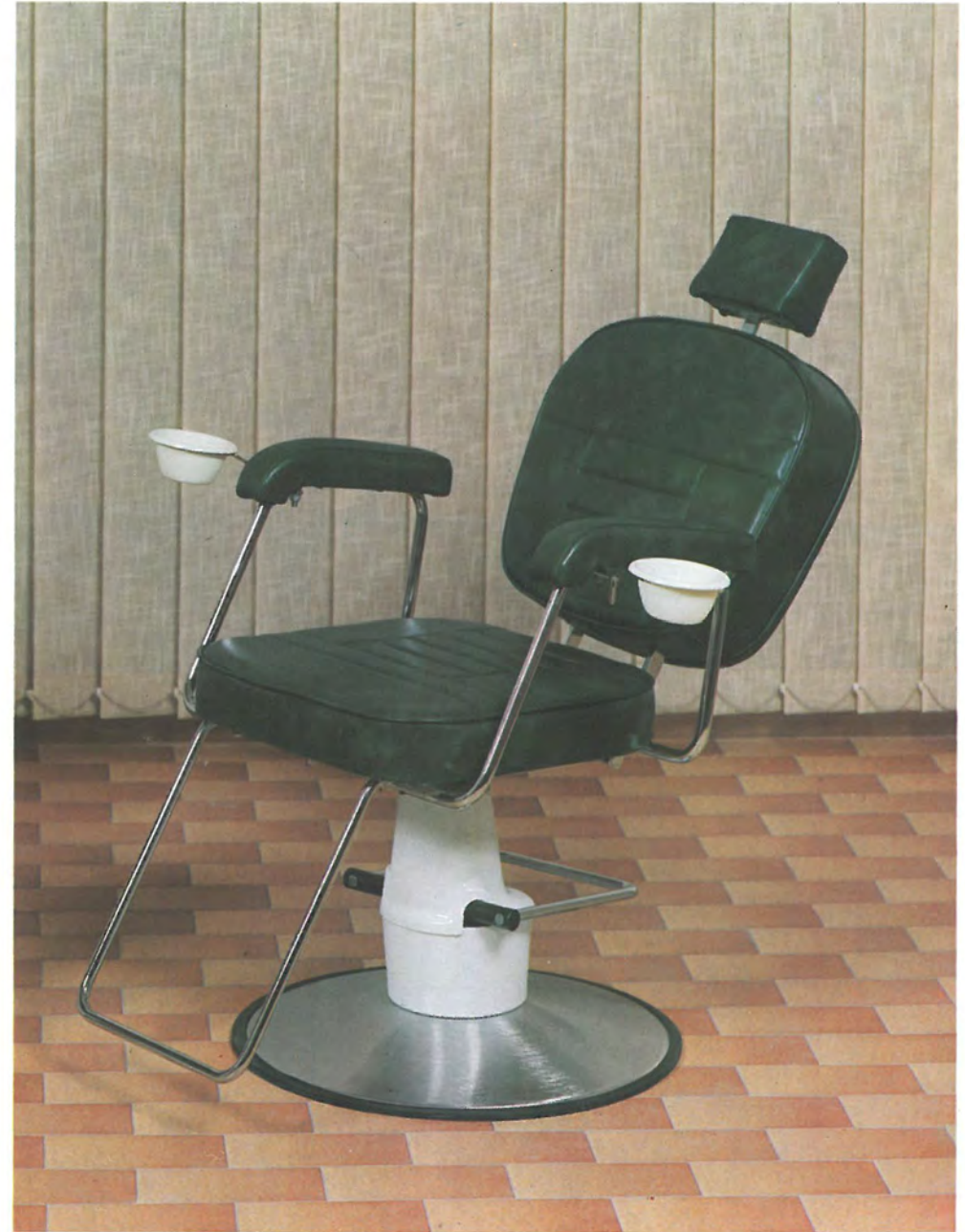
Art. 585 Barber chair with frame in chromium steel and big hydraulic pump.



Art. 586 Barber chair with frame in inox steel and big hydraulic pump.



Art. 588 Barber chair with frame in varnished steel and big hydraulic pump.



Art. 587 Revolving chair with adjustable back and special hydraulic pump.



Art. 578 - Revolving chair for working.



Art. 575 - Waiting-chair with frame in chromium tube.



Art. 570 - Two place shampoo unit with wash basins of pottery revolving and reclining.



Art. 486 - Single place shampoo wit wash basin of plexiglas.

Art. 528 - Single place shampoo with was basin of pottery.



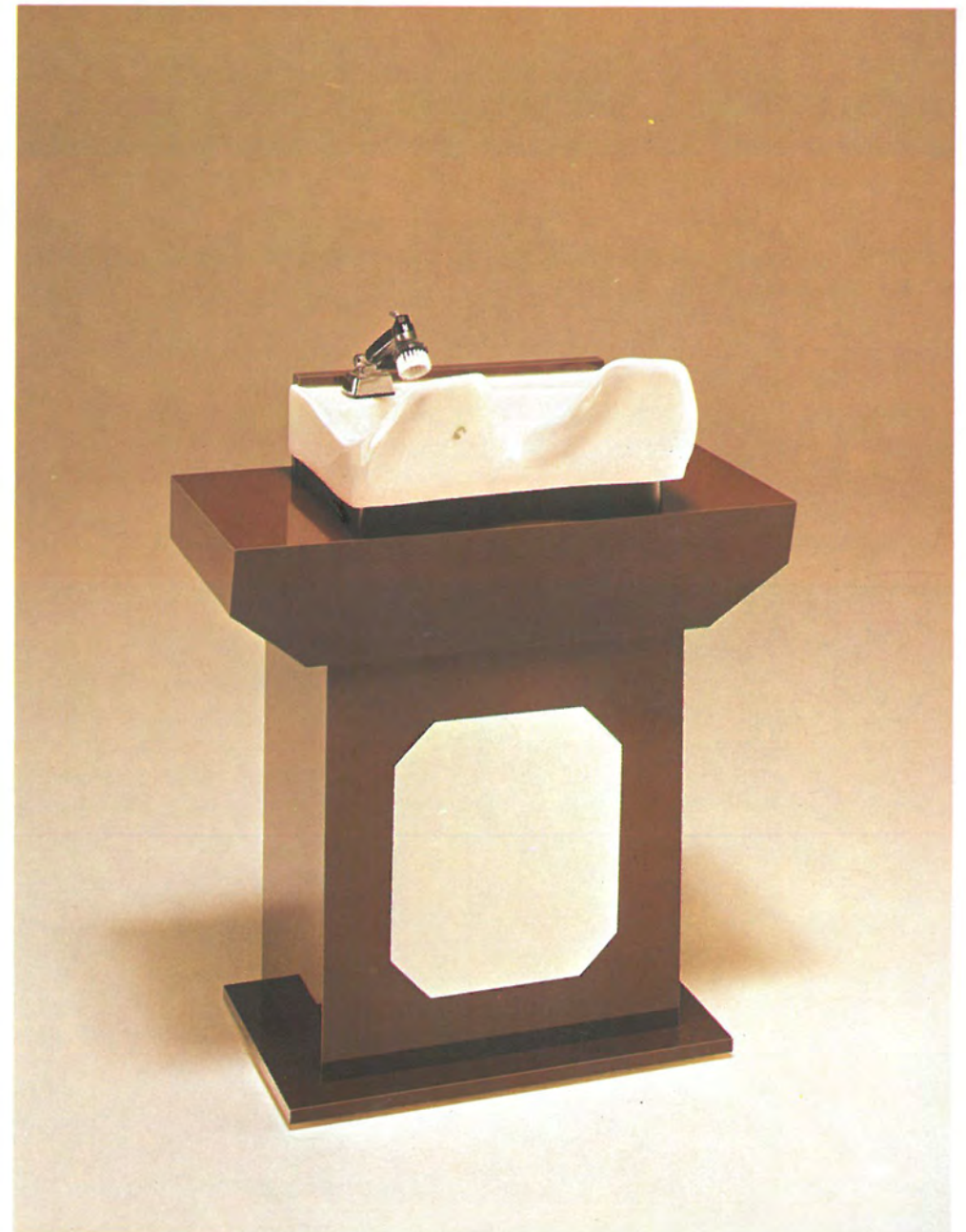


Art. 321 Two place shampoo unit with basins revolving and reclining, complete as picture - size cm. 130 x 100 x 45.

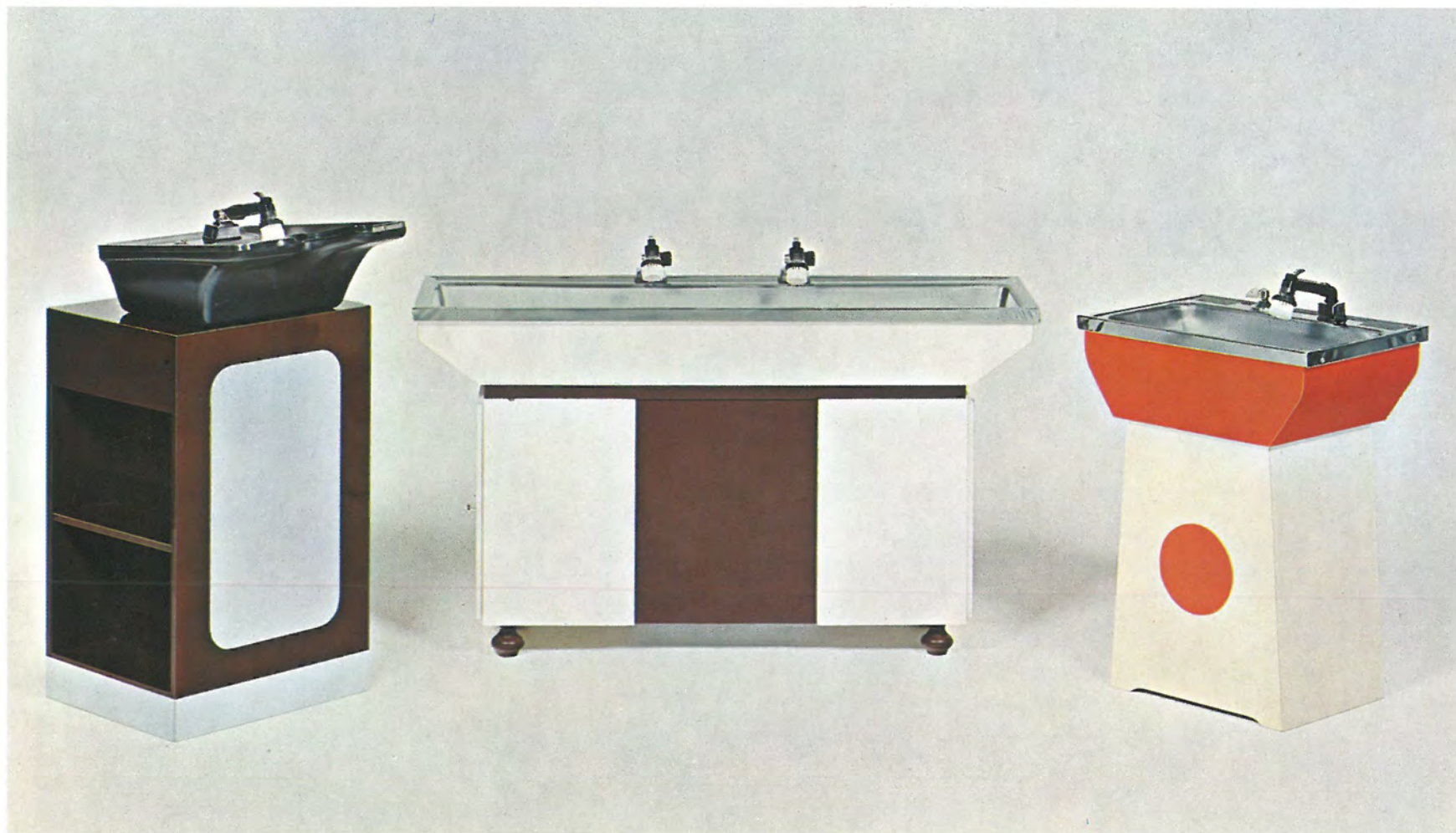
Art. 322 Single place shampoo with basin revolving and reclining, complete as picture - size cm. 55 x 100 x 45.



Art. 424 - Two places shampoo unit with wash basins of pottery in white colour.



Art. 431 - Single place shampoo with wash basin of pottery in white colour.



Art. 489 - Single trough shaped shampoo unit in steel Inox.

Art. 430 - Shampoo unit Inox finished basin, 140 cm.

Art. 490 - Single shampoo unit basin in steel Inox.



Art. 220 - Trolley in laminated plastic and made in chrome.

Art. 440 - Roller trolley

Art. 222 - Big roller trolley with made in chrome.



Art. 224 - Trolley in chromium-metall - colours: white, orange, brown and black.

Art. 520 - Manicure table in ABS and chromium-metal - colours: white, orange and black.

Art. 225 - Trolley with six shelves in ABS and chromium-metal - colours: as 224.



Art. 323 Cash desk in laminated as picture - size cm. 100 x 80 x 45.



Art. 524 - Laminated cash-desk with two drawers.
Art. 525 - Laminated cash-desk with glass show case.



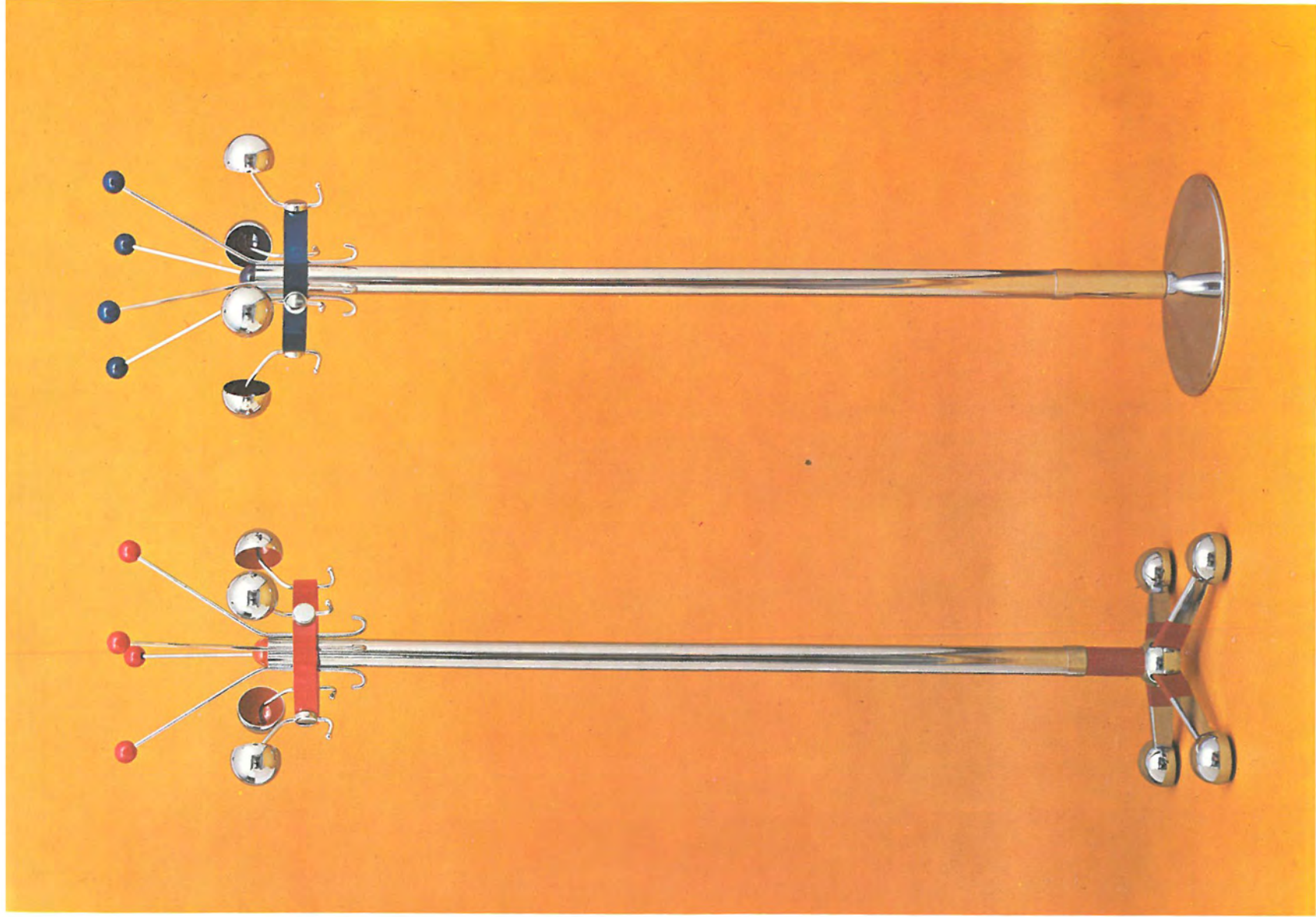
- Art. 324** Cash desk in laminated with drawer as picture - size cm. 80 x 80 x 45.
Art. 461 Cash desk in laminated with glass show case - size cm. 80 x 80 x 45.
Art. 484 Cash desk in laminated with crystal surface and drawer - size cm. 100 x 80 x 45.



Art. 325 Cash desk in laminated type walnut wood - size cm. 80 x 80 x 100



Art. 326 Cash desk in laminated - size cm. 80 x 80 x 100.



Art. 464 - Column shaped coat stand in chromium-metal.
Art. 507 - Coat-hanger with column in chromium-plated.



- Art. 215** Trolley with six black shelves in ABS material.
Art. 218 Trolley with three half-spheres in white and two holes for hand-dryer.
Art. 228 Trolley with three white shelves.



- Art. 227** Trolley with five ivory shelves and brow frame, all in ABS material.
Art. 216 Trolley with six black shelves and chromium frame with two holes for hand-dryer.



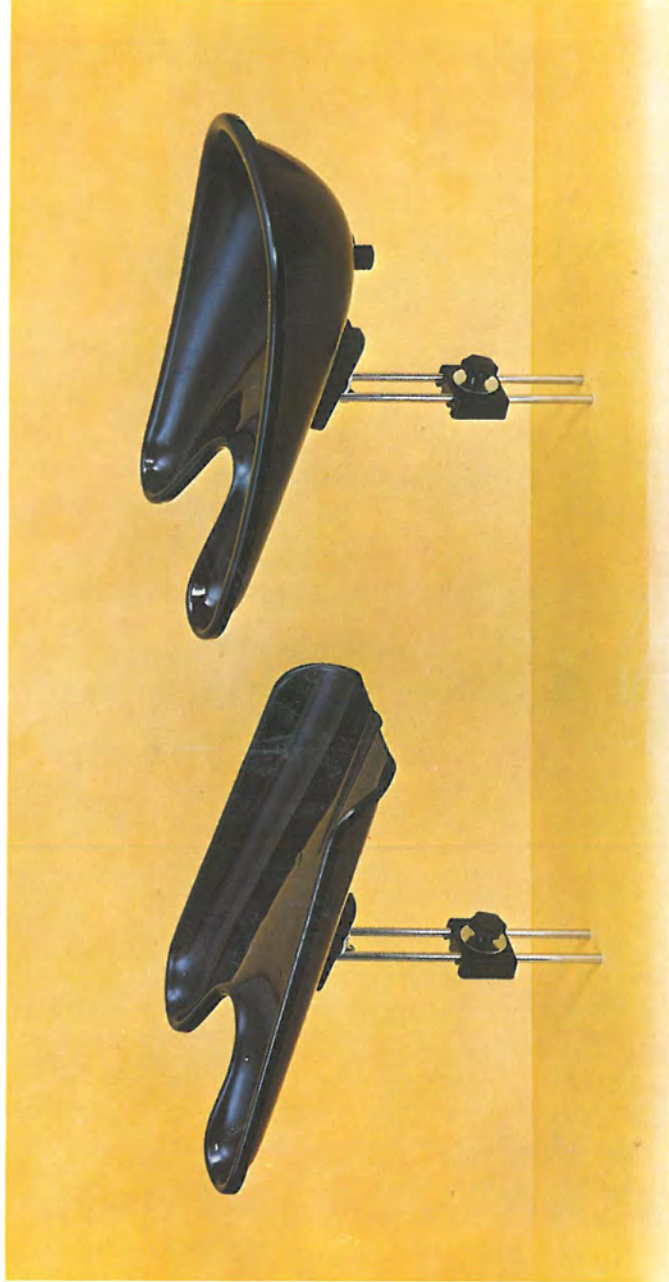
Art. 214 - Trolley with four shelves in Moplen colours: black and ivory.

Art. 202 - Trolley with two-shelf in Moplen, colours: black and ivory.

Art. 213 - Trolley with four shelves inclineds in Moplen, colours: as 214



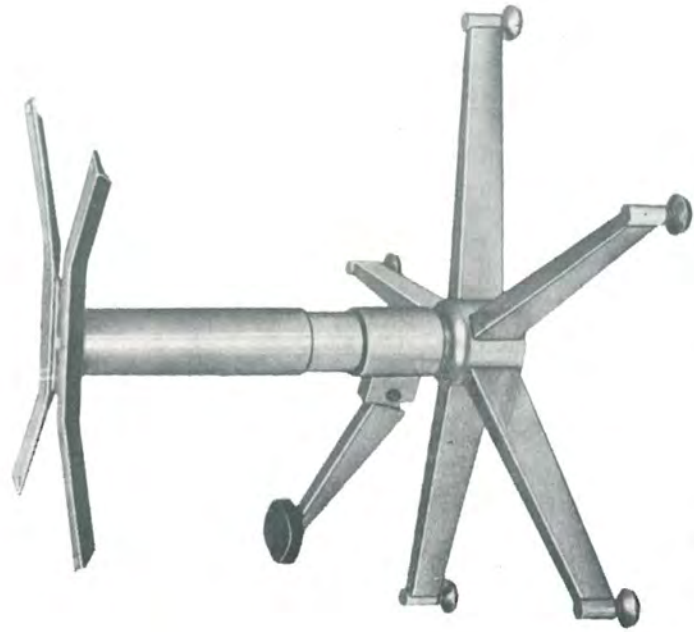
Art. 211 - Wash basin special in Moplen, colours: black and ivory.
 Art. 203/bis - Wash basin in Moplen with water tank, colours: as 211.
 Art. 203 - Wash basin in Moplen with pedestal, colours: as 211.



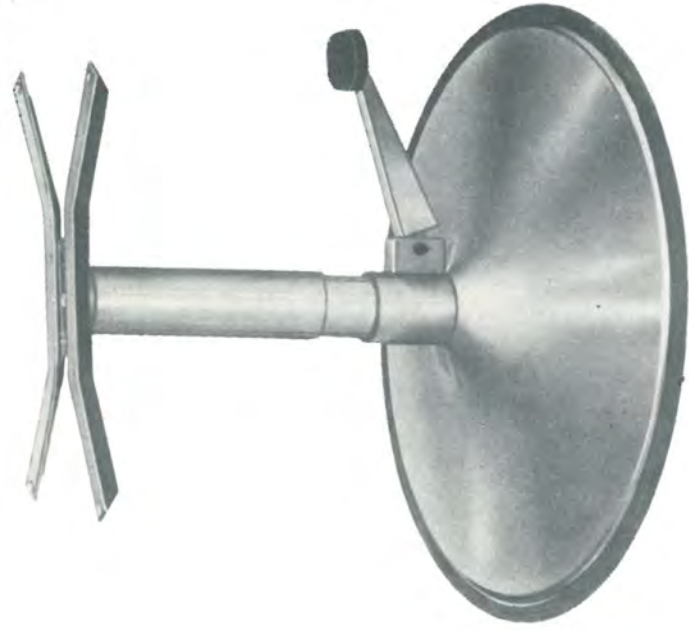
Art. 204 - Wash basin in Moplen with attachment for chair, colours: as 211.
 Art. 206 - Water cude for shampooing with attachment for chair, colours: as 211.



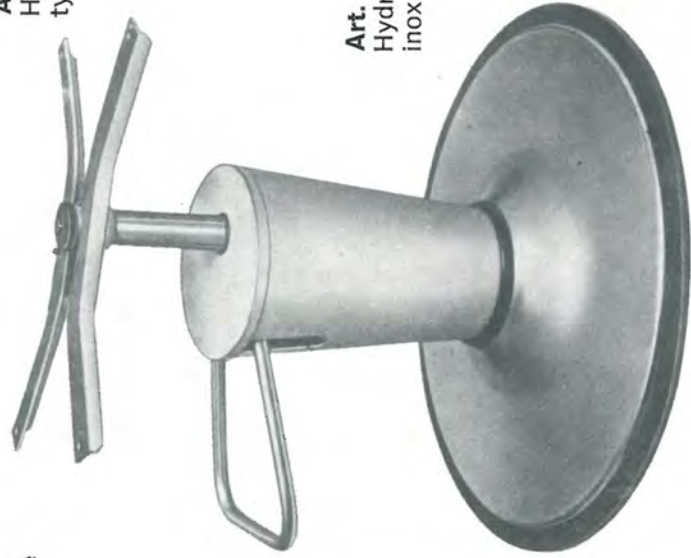
- Art. 308** Little chair for waiting in black frame.
Art. 307 Little chair with black wash basin attached.
Art. 311 Little chair for waiting or shampooing.



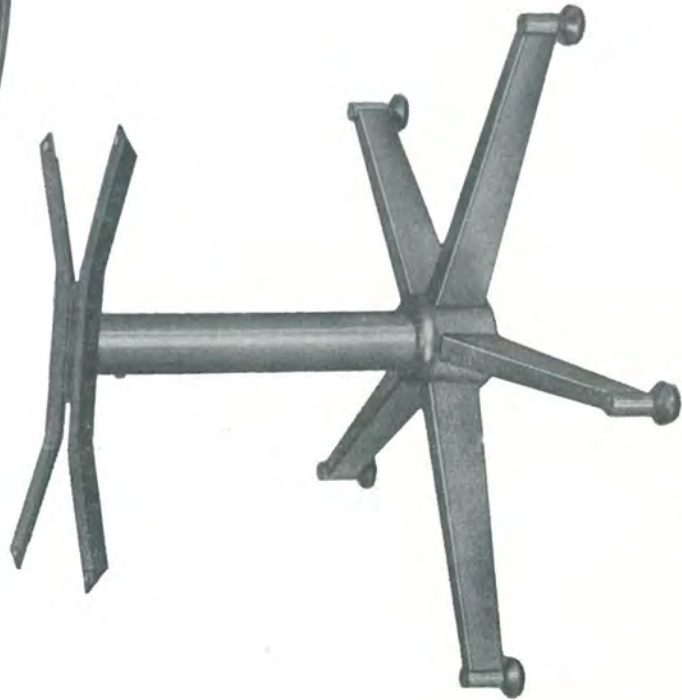
Art. 10
Hydraulic pump inox with base
type star



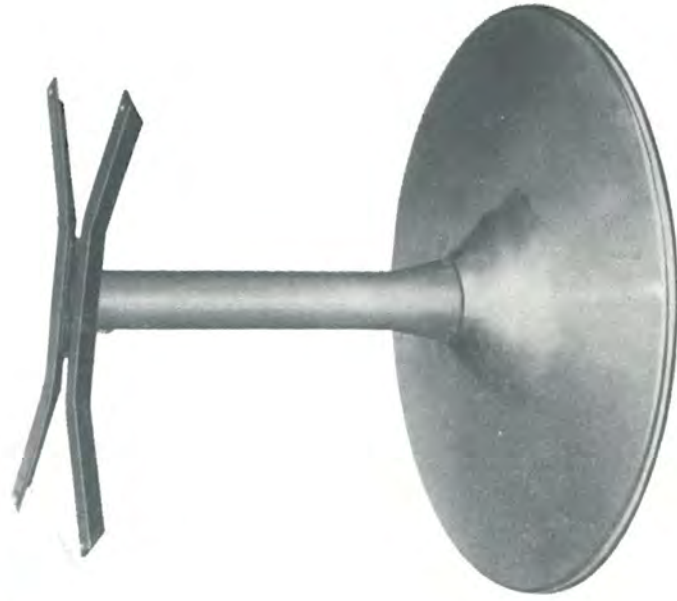
Art. 20
Hydraulic pump inox with base
type disc



Art. 50
Hydraulic pump Unisex, base disc
inox



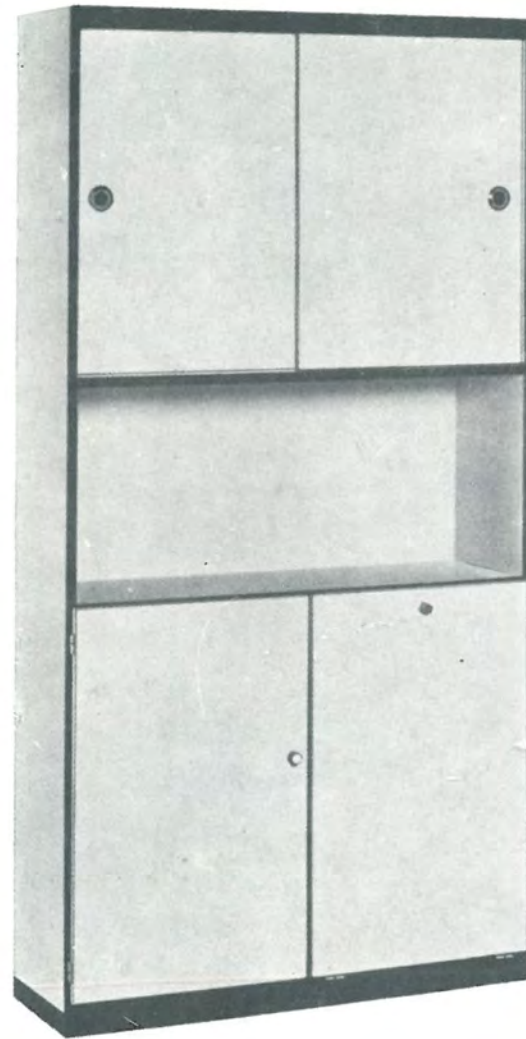
Art. 30
Base type star inox with 5 spokes



Art. 40
Base type disc inox



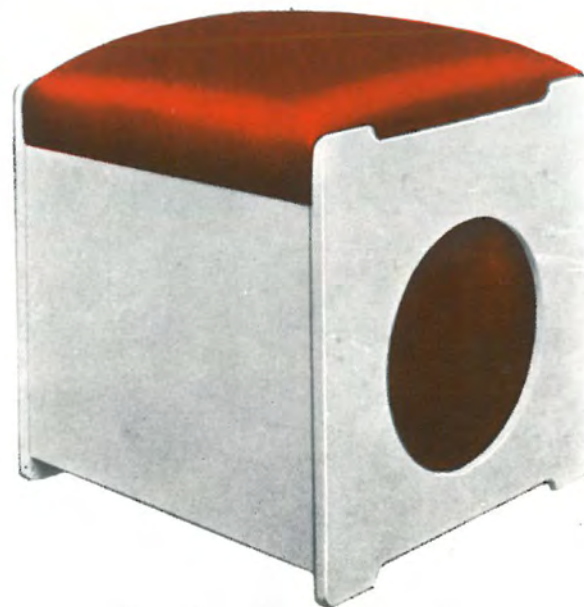
Art. 428 - Service cupboard with laminated sliding doors, cm. 180 x 120 x 30.



Art. 504 - Service cupboard with laminated sliding doors, cm. 190 x 95 x 30.



Art. 309 - Manicure table with leather seat and laminated top section.



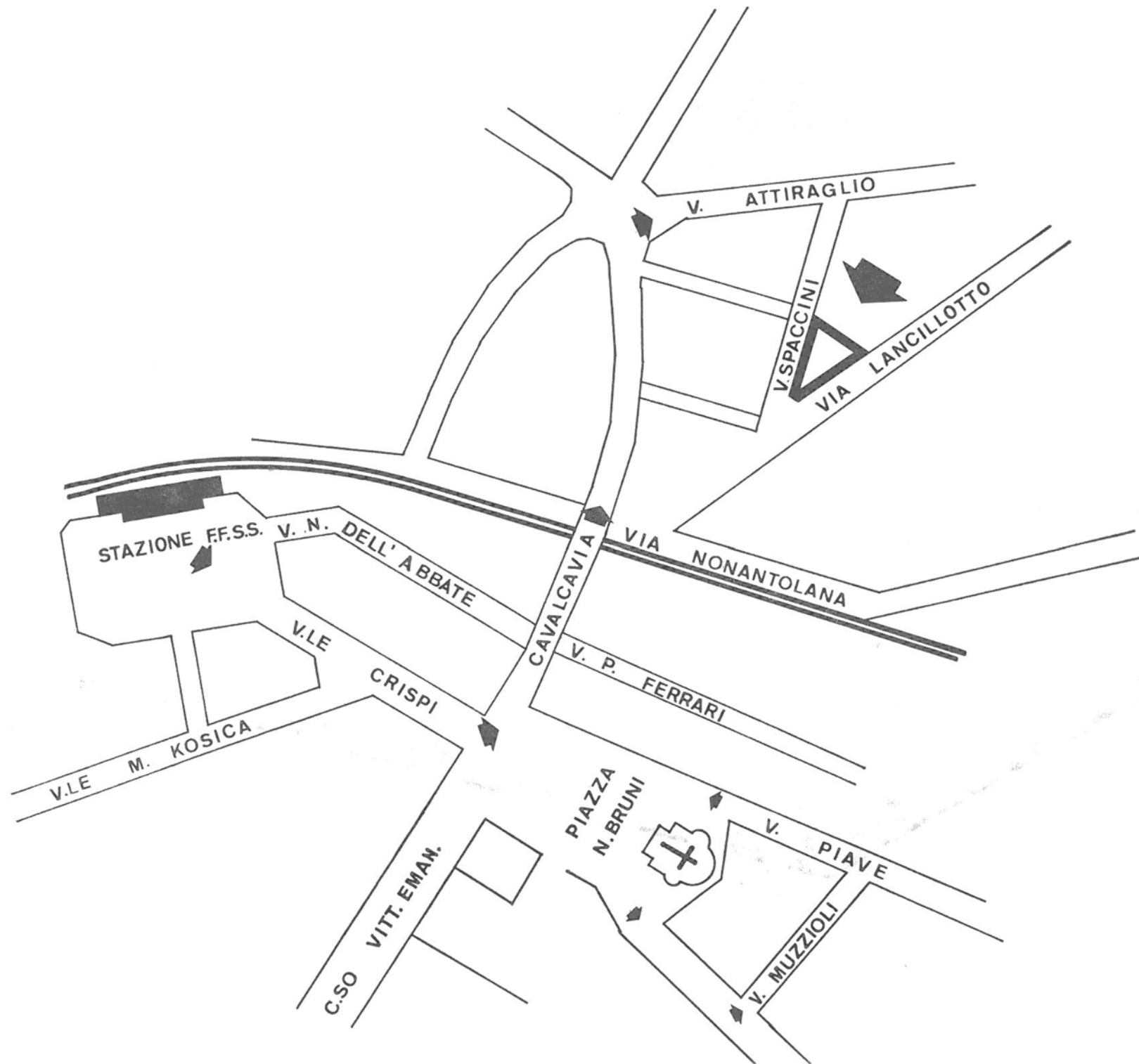
Art. 425 - Leather-covered waiting stool

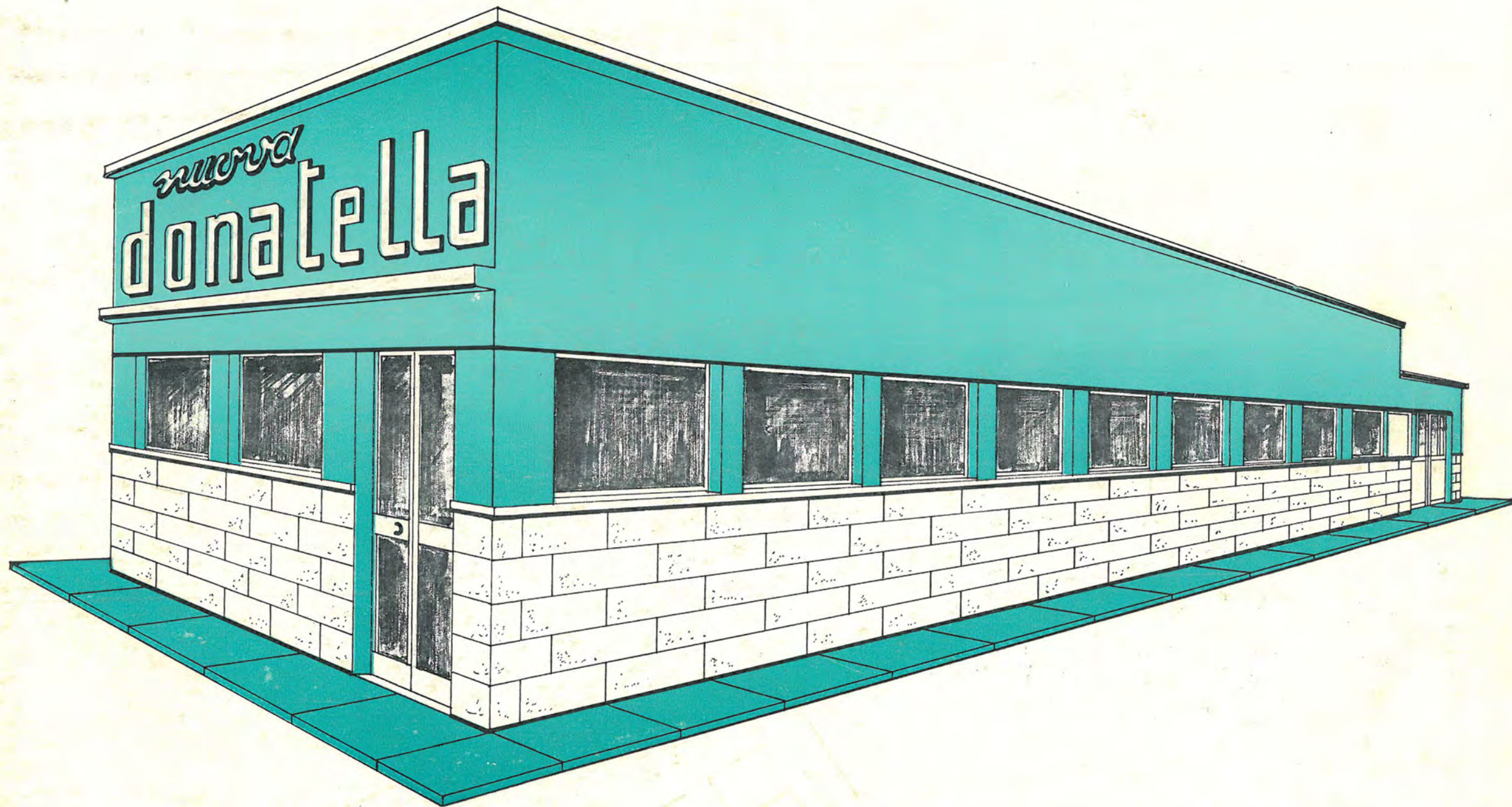


Art. 319 Chair for massages in open position.



Art. 319 Chair for massages in closed position, colour: white, bleu, black, ivory only.





NUOVA DONATELLA s.n.c. - di Omero Preti & C.

VIA G. B. SPACCINI 2 - VIA LANCILLOTTO 5 - TELEF. (059) 31.20.87 - 31.21.17 - **41100 MODENA - ITALY**